



GMT MONTHLY MEMBERSHIP PROGRESS REPORT

Results as of: 12/31/2018

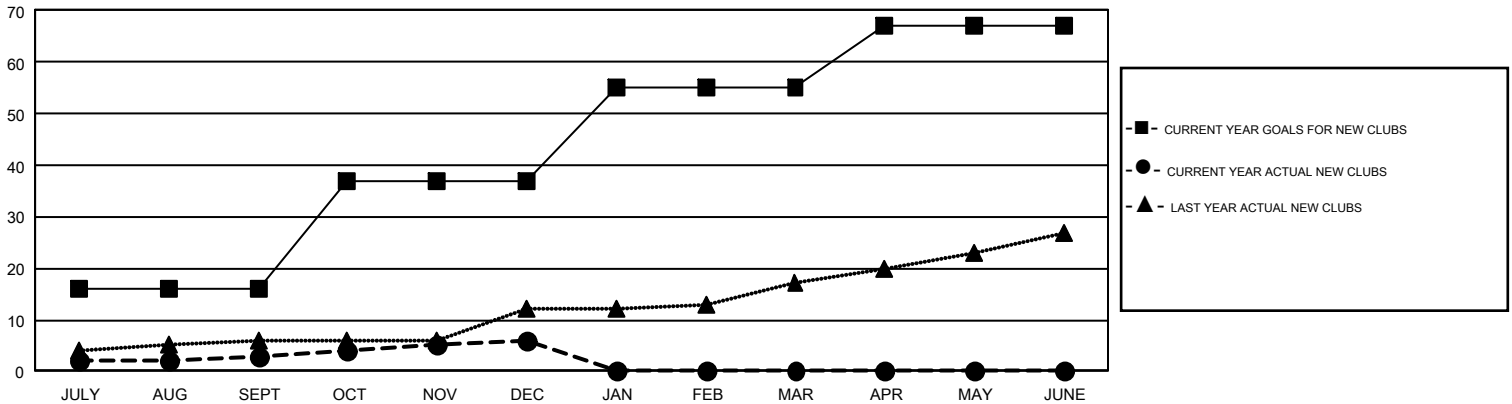
GMT Constitutional Area 1, Group H

GMT: HOWARD HUDSON

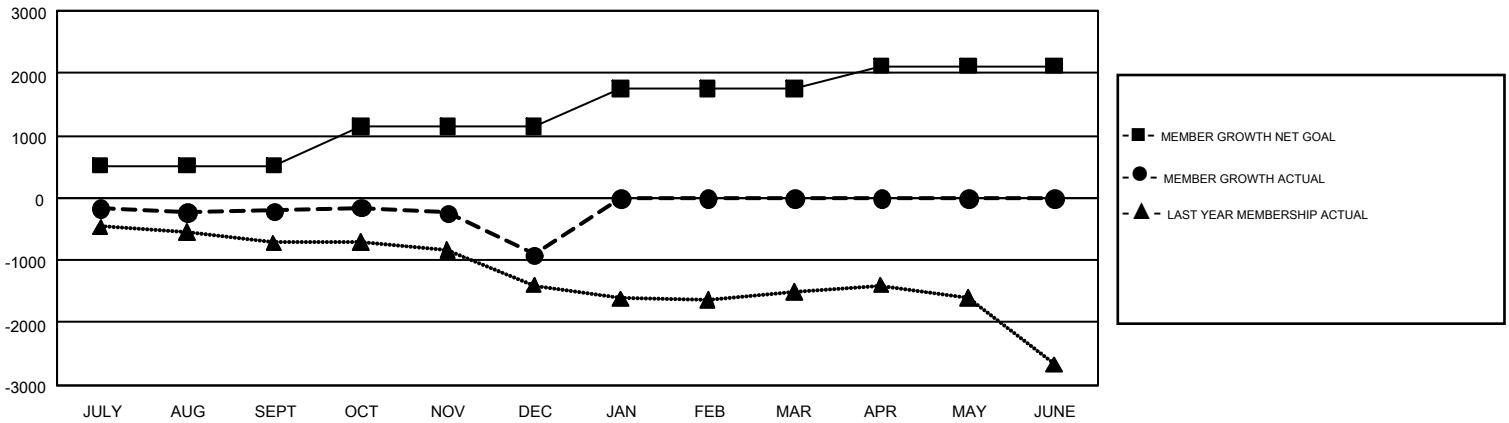
REPORT DOES NOT INCLUDE CLUBS IN UNDISTRICTED AREAS.

Clubs				Members			
RESULTS FOR 2018-2019				RESULTS FOR 2018-2019			
QUARTER	NEW CLUB GOAL	NEW CLUBS	DROPPED CLUBS	QUARTER	MEMBER GROWTH NET GOAL	MEMBER GROWTH ACTUAL	DROPPED MEMBERS ACTUAL (including transfers)
JULY/AUG/SEPT	16	3	12	JULY/AUG/SEPT	521	1,249	1,256
OCT/NOV/DEC	21	3	6	OCT/NOV/DEC	622	1,062	1,655
JAN/FEB/MAR	18	0	0	JAN/FEB/MAR	608	0	0
APR/MAY/JUNE	12	0	0	APR/MAY/JUNE	365	0	0

GOALS AND ACTUAL NEW CLUBS CUMULATIVE



GOALS AND ACTUAL MEMBERS CUMULATIVE



DROPPED CLUBS: 18	643 CLUBS OF 1,395 ADDED 1 OR MORE NEW MEMBERS	<u>GENDER DISTRIBUTION</u>
<u>DROPPED MEMBERS</u>	CLICK HERE FOR CUMULATIVE MEMBERSHIP DATA	MALE 22,777 (62.11%)
DECEASED 242		FEMALE 13,895 (37.89%)
CLUB CANCELLED 86		TOTAL FAMILY UNIT MEMBERS 7,554
OTHER 2,581		FAMILY MEMBERS PAYING HALF DUES 3,909
TOTAL 2,909		